



VISITOR INFORMATION

BAROSSA VISITOR CENTRE

66-68 Murray Street, Tanunda
(08) 8563 8334 or 1300 852 982
visitorcentre@barossa.sa.gov.au
Open Mon to Fri 9am-5pm
Saturdays 9am-4pm
Sundays & public holidays 10am-4pm
Closed Christmas Day and Good Friday

GAWLER VISITOR INFORMATION CENTRE

2 Lyndoch Road, Gawler
(Relocating during 2026 to
43 High Street, Gawler East)
(08) 8522 9260
visitor.centre@gawler.sa.gov.au
Open Mon to Fri 9:30am-4:30pm
Weekends & public holidays 9:30am-1pm
Closed Christmas Day and Good Friday

LIGHT COUNTRY VISITOR INFORMATION CENTRE

51-53 Main St, Kapunda
(08) 8566 2902 or 1300 770 301
visitorcentre@light.sa.gov.au
Open weekdays, Mon & Thurs 9am-6pm
Tues, Wed & Fri 9am-5pm
Weekends & public holidays 9am-1pm

Stay in contact – join us at **BAROSSA** on facebook and instagram

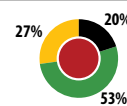
Proudly supported by



Gawler

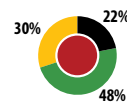
LAVENDER FARM LOOP (17km)

The loop traverses the foothills of the Barossa Ranges and is an undulating, semi-sealed ride linking Lyndoch Lavender Farm to other iconic locations such as God's Hill Wines and Kellermeister Wines. Cyclists looking for a longer ride can continue onto the Steingarten Loop from the Tweedies Gully Road and Trial Hill Road intersection.



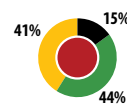
MAWSON MEANDER (10km)

This linear ride follows a ridgeline on the Western Barossa rim. There are some short climbs to get up onto the rim, but the ride soon becomes a series of steady rises that reward cyclists with some of the best views of the Barossa's rural landscape. The Mawson Meander can be used to create a loop with the Tanunda to Rowland Flat section of the Barossa Trail. Keep in mind that Golf Links Road is unsealed.



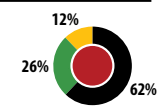
GOMERSAL TRAIL (13km)

Linking Lyndoch to Seppeltsfield, this sealed route takes you off the Barossa Valley Way using local farm roads that feature broad acres and big skies.



STEINGARTEN LOOP (12km)

The famous Steingarten or 'Stone Garden' vineyard lookout provides expansive landscape views of the Western Barossa and the Jacob's Creek catchment. This gravel road loop is a great detour from the Barossa Trail for the fit and adventurous. Either direction will involve some challenging climbs and fast descents and can be subject to wind exposure so check the weather before you ride. Cycling the loop in a clockwise direction via Steingarten Road from Rowland Flat is easiest.



TRAIL GRADES

- EASY** – Suitable for novice cyclists, families and others seeking a flat cycling terrain. Any type of bike is suitable and the route is predictable.
- INTERMEDIATE** – Undulating ride that requires a multi-geared bike and some self confidence in bike handling skills. Some cycling experience is needed.
- ADVANCED** – Some challenging climbs and descents requiring good bike handling skills and a good level of fitness.

BAROSSA BY BIKE

Barossa Grape & Wine Association



THE BAROSSA TRAIL

There is no better way to explore Barossa's hand crafted wines, distinctive regional food, and rich heritage than by bike. The Barossa Trail is a high-quality sealed cycling and walking network extending 40 kilometres from Angaston to Gawler via the three main townships of Nuriootpa, Tanunda and Lyndoch.

This network extends to surrounding towns leading travellers on a journey of discovery. Rural landscapes, hidden attractions and expansive views.



Tourism Australia - South Australia Tourism Commission



Tony Treweek

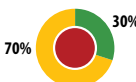


ANGASTON TO NURIOOTPA (6KM)

Angaston is one of the region's highest townships and home to a variety of cafes, wine bars, cellar doors, B&Bs and boutique retailers, as well as a bike shop, cheesemaker and Italian cooking school.

Offering ample parking, the historic Angaston Railway Station was completed in 1911 and is listed as a State Heritage Place. From here it's an easy descent to Nuriootpa, affording panoramic views over the Valley floor and rolling vineyards that symbolise Barossa.

People venturing off the path will discover many attractions for visitors and families, including Barossa Bushgardens, Mengler Hill Sculpture Park, Barossa Farmers Market (held each Saturday morning) and a variety of cellar doors.



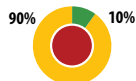
NURIOOTPA TO TANUNDA (7KM)

Nuriootpa is the commercial hub of the Barossa and central to the region's wine production. 'Nuri', as it's locally known, boasts retail outlets, eateries, and a scenic riverside walk through Linear Park.

Nuriootpa's Tolley Reserve and playground is great for families. The ride to Tanunda is mostly flat terrain with many interesting sites en-route including wineries, historic buildings and the entrance to the iconic Seppeltsfield Road.

Tanunda is known as the 'heritage heart of the Barossa' and retains all the village charm and character of yesteryear.

The town features historic buildings and churches, a Heritage Trail, Regional Gallery, Barossa Museum, a brewery, retail therapy and a thriving al fresco café culture, making it a perfect place to unwind. Tanunda is also home to the Barossa Visitor Centre offering cycle hire facilities and a range of visitor services.

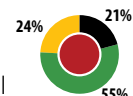


TANUNDA TO LYNDCH (14KM)

Varying in its degree of difficulty, this leg of the Barossa Trail showcases some of the state's most beautiful natural terrain. Every turn offers a new surprise, as towering gums give way to sweeping vistas and vineyards, against the backdrop of the Barossa Ranges. Kangaroos, echidnas and birdlife abound, along with a collection of well-known wineries and cellar doors to break the journey.

Midway between Tanunda and Lyndoch is Rowland Flat, best known for its proximity to Jacob's Creek – the site of Barossa's first commercial vine plantings in 1847 and an ultramodern cellar door.

Altona Landcare Reserve is a must-see for nature lovers before making the picturesque descent into Lyndoch. The route features an array of restaurants, wineries, Tanunda Pines Golf Club, and high-end accommodation, providing a myriad of options for locals and holiday-makers alike.

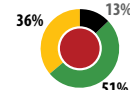


LYNDCH TO GAWLER (13KM)

Established in 1837, Lyndoch is one of South Australia's oldest towns and home to a number of boutique, family-owned vineyards and cellar doors. The town boasts traditional artisans, restaurants and cafes offering authentic German-style meals, smallgoods, freshly baked pies and sweet delights. The route travels through the Lyndoch Hill Rose Garden.

Pristine conservation and recreation parks near Sandy Creek and Cockatoo Valley provide excellent bushwalking and sightseeing opportunities – don't forget the camera!

Gawler is the final destination on the Barossa Trail, where heritage charm meets contemporary conveniences to create a thriving retail and commercial centre. An extensive linear path follows Gawler's natural river corridor, and a short distance away is the Northern Expressway and Stuart O'Grady Bikeway to Adelaide. Gawler offers a Bike Hub with a range of visitor services.



HISTORY

The Barossa Council officially opened the Angaston to Nuriootpa Bike Path in 2010. As the trail follows the old railway line, original railway sleepers were recycled and used in interpretive signage.

The Tanunda to Gawler section opened in 2013, completing Council's 40km continuous shared use path across the Valley floor.

LINKS AND CONNECTIONS

The Barossa is located about one hour from Adelaide by car, or catch the train to Gawler and connect with the Barossa Trail or LinkSA bus service.

For more details visit

- LinkSA bus – www.linksa.com.au
- Train service – www.adelaidemetro.com.au
- Cycle Instead Journey Planner – www.maps.sa.gov.au/cycleinstead
- Local maps and road cycling routes – www.Barossa.com or visit a local Visitor Information Centre

Mawson Trail – www.mawsontrail.com

INFORMATION AND RESOURCES FOR NEW OR RUSTY RIDERS

- www.dpti.sa.gov.au/cycling

EMERGENCY CONTACTS

In a life threatening or time critical emergency call 000

- SES – Rescue, Floods and Storms – 132 500
- Non-Emergency/Police Assistance – 131 444
- Nuriootpa Police Station – 8568 6620
- Barossa Wildlife Rescue – 0402 646 574

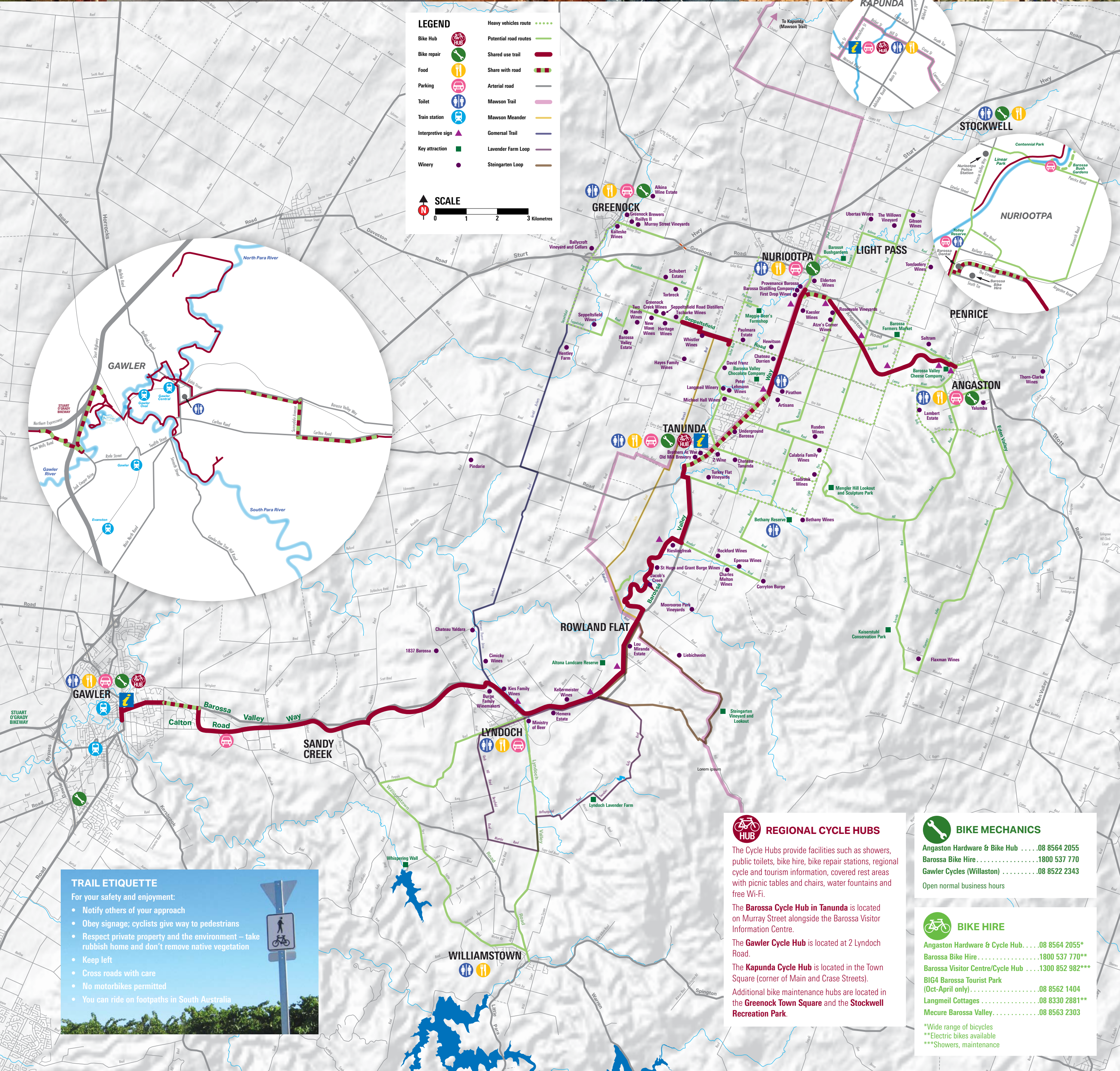


Barossa Australia

SATC



BAROSSA BY BIKE



LEGEND

Bike Hub

Bike repair

Food

Parking

Toilet

Train station

Interpretive sign

Key attraction

Winery

Heavy vehicles route

Potential road routes

Shared use trail

Share with road

Arterial road

Mawson Trail

Mawson Meander

Gomersal Trail

Lavender Farm Loop

Steingarten Loop

SCALE

0

1

2

3

Kilometres

TRAIL ETIQUETTE

For your safety and enjoyment:

- Notify others of your approach
- Obey signage; cyclists give way to pedestrians
- Respect private property and the environment – take rubbish home and don't remove native vegetation
- Keep left
- Cross roads with care
- No motorbikes permitted
- You can ride on footpaths in South Australia

REGIONAL CYCLE HUBS

The Cycle Hubs provide facilities such as showers, public toilets, bike hire, bike repair stations, regional cycle and tourism information, covered rest areas with picnic tables and chairs, water fountains and free Wi-Fi.

The **Barossa Cycle Hub in Tanunda** is located on Murray Street alongside the Barossa Visitor Information Centre.

The **Gawler Cycle Hub** is located at 2 Lyndoch Road.

The **Kapunda Cycle Hub** is located in the Town Square (corner of Main and Crase Streets).

Additional bike maintenance hubs are located in the **Greenock Town Square** and the **Stockwell Recreation Park**.

BIKE MECHANICS

Angaston Hardware & Bike Hub08 8564 2055

Barossa Bike Hire1800 537 770

Gawler Cycles (Willaston)08 8522 2343

Open normal business hours

BIKE HIRE

Angaston Hardware & Cycle Hub.08 8564 2055*

Barossa Bike Hire1800 537 770**

Barossa Visitor Centre/Cycle Hub1300 852 982***

BIG4 Barossa Tourist Park (Oct-April only)08 8562 1404

Langmeil Cottages08 8330 2881**

Mecure Barossa Valley.08 8563 2303

*Wide range of bicycles

**Electric bikes available

***Showers, maintenance